

# **OPCTalk for MasterK**

Document No : DSM-MasterK  
Released Date : 2007 11 1

Copyright © 1996-2007 by

1996-2007 Jeo & JongBo Inc.

THESE MATERIALS ARE PROVIDED " AS-IS," FOR INFORMATIONAL PURPOSES ONLY.

NEITHER JEO&JONGBO NOR ITS SUPPLIERS MAKES ANY WARRANTY, EXPRESS OR IMPLIED WITH RESPECT TO THE CONTENT OF THESE MATERIALS OR THE ACCURACY OF ANY INFORMATION CONTAINED HEREIN, INCLUDING, WITHOUT LIMITATION, THE IMPLIED WARRANTIES OF MERCHANTABILITY OR FITNESS FOR A PARTICULAR PURPOSE. BECAUSE SOME STATES/JURISDICTIONS DO NOT ALLOW EXCLUSIONS OF IMPLIED WARRANTIES, THE ABOVE LIMITATION MAY NOT APPLY TO YOU.

NEITHER JEO&JONGBO NOR ITS SUPPLIERS SHALL HAVE ANY LIABILITY FOR ANY DAMAGES WHATSOEVER INCLUDING CONSEQUENTIAL INCIDENTAL, DIRECT, INDIRECT, SPECIAL, AND LOSS PROFITS. BECAUSE SOME STATES/JURISDICTIONS DO NOT ALLOW THE EXCLUSION OF CONSEQUENTIAL OR INCIDENTAL DAMAGES, THE ABOVE LIMITATION MAY NOT APPLY TO YOU. IN ANY EVENT, JEO&JONGBO' S AND ITS SUPPLIERS' ENTIRE LIABILITY IN ANY MANNER ARISING OUT OF THESE MATERIALS, WHETHER BY TORT, CONTRACT, OR OTHERWISE SHALL NOT EXCEED THE SUGGESTED RETAIL PRICE OF THESE MATERIALS.

OPCTalk™ ( )

<b>1.</b>	.....	<b>1</b>
	.....	1
<b>2.</b>	.....	<b>3</b>
	.....	3
	.....	3
	.....	3
	.....	4
	.....	4
	.....	4
	.....	4
	.....	5
	.....	5
	.....	5
	.....	5
	.....	7
	.....	8
	.....	9
<b>3.</b>	.....	<b>13</b>
	.....	13
	.....	14
	.....	14
가	.....	14
	.....	15
	.....	15
	.....	15
	.....	16
	.....	16
	.....	17
	.....	21
	.....	21
<i>PLC</i>	.....	22
<i>Memory Block</i>	.....	23
	.....	26
<i>Timeout</i>	.....	27
<i>Redundancy</i> .....	.....	28
	.....	31
<i>Online</i> .....	.....	31
<i>Offline</i> .....	.....	31
	.....	32
	.....	32
<i>Command</i> .....	.....	32
<i>Action</i> .....	.....	33
	.....	33
<i>Log</i> .....	.....	33

.....	34
<b>4. NAMING.....</b>	<b>35</b>
.....	35
.....	35
OFFSET .....	35
<i>Bit</i> .....	36
TYPE .....	37
.....	38
<b>5. CLIENT .....</b>	<b>41</b>
EXCEL .....	41
<i>OPC</i> .....	41
<i>DDE</i> .....	41
INTOUCH .....	42
<i>OPC</i> .....	42
<i>DDE</i> .....	42
FIX .....	42
<i>OPC</i> .....	43
<i>DDE</i> .....	44
RSVIEW32 .....	44
<i>OPC</i> .....	44
<i>DDE</i> .....	45
<b>6. NETWORK DATA .....</b>	<b>47</b>
OPC .....	47
<i>Server</i> .....	47
<i>Client</i> .....	52
NETDDE .....	53
<i>Server</i> .....	53
<i>Client</i> .....	55
<b>APPENDIX.....</b>	<b>57</b>
<i>V3.2.x</i> .....	57
<i>V3.1.x</i> .....	57
<i>V3.0.x</i> .....	58
<i>V2.5.x</i> .....	59
<i>V2.4.x</i> .....	59
<i>V2.3.x</i> .....	60
<i>V2.2.x</i> .....	60
<i>V2.1.x</i> .....	60
<i>V2.0.x</i> .....	63
<i>v1.9.x</i> .....	65
<i>v1.8.x</i> .....	66
<i>v1.7.x</i> .....	67
<i>v1.6.x</i> .....	67
<i>v1.5.x</i> .....	68





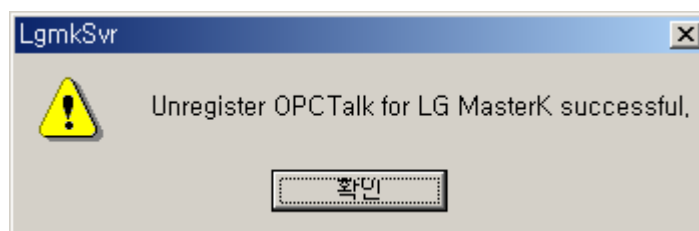
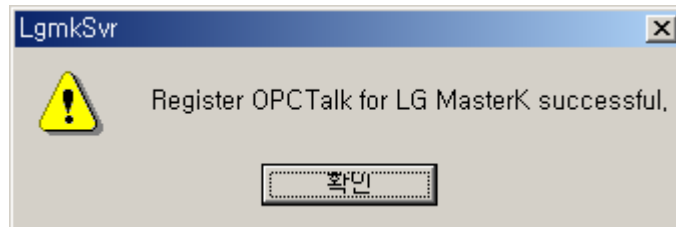
## 2.

CD

- OTLGmkSvr.exe



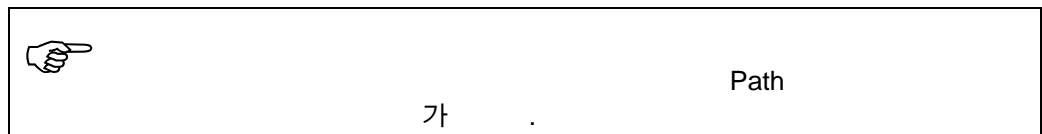
- 



Windows

- 
- OTLgmk /regserver

OTLgmk /unregserver



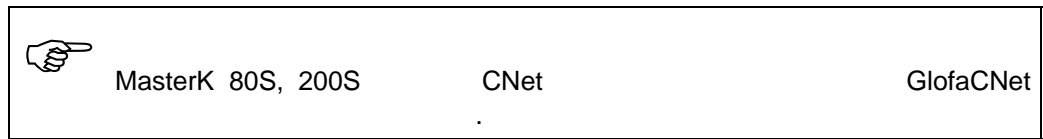
---

## PLC

MASTER-K10S / 10S1 / 30S / 60S / 100S

K50H / K60H / K200H

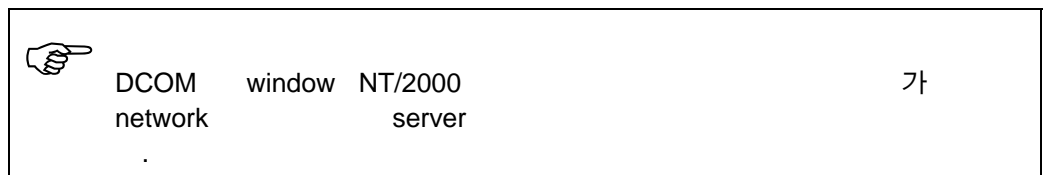
K500H / K1000H



Win98/Me/NT/2000/XP가

가

- Windows2003/XP
- Win2000/NT
- WinMe/98
- Microsoft DCOM 1.3



- Serial Port

가  
Icon

Program  
Bin

->  
OTLgmk.exe

register

CD



Evaluate

1

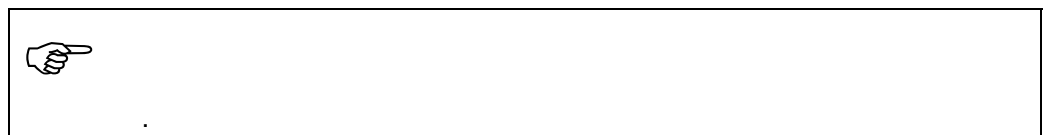
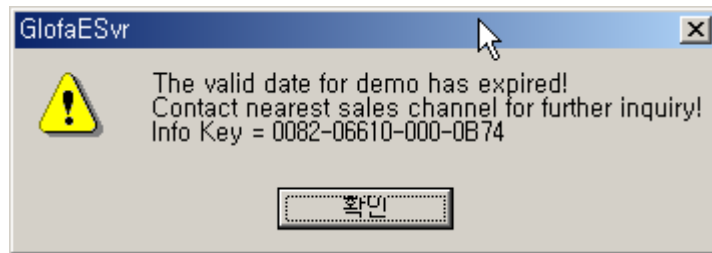
가

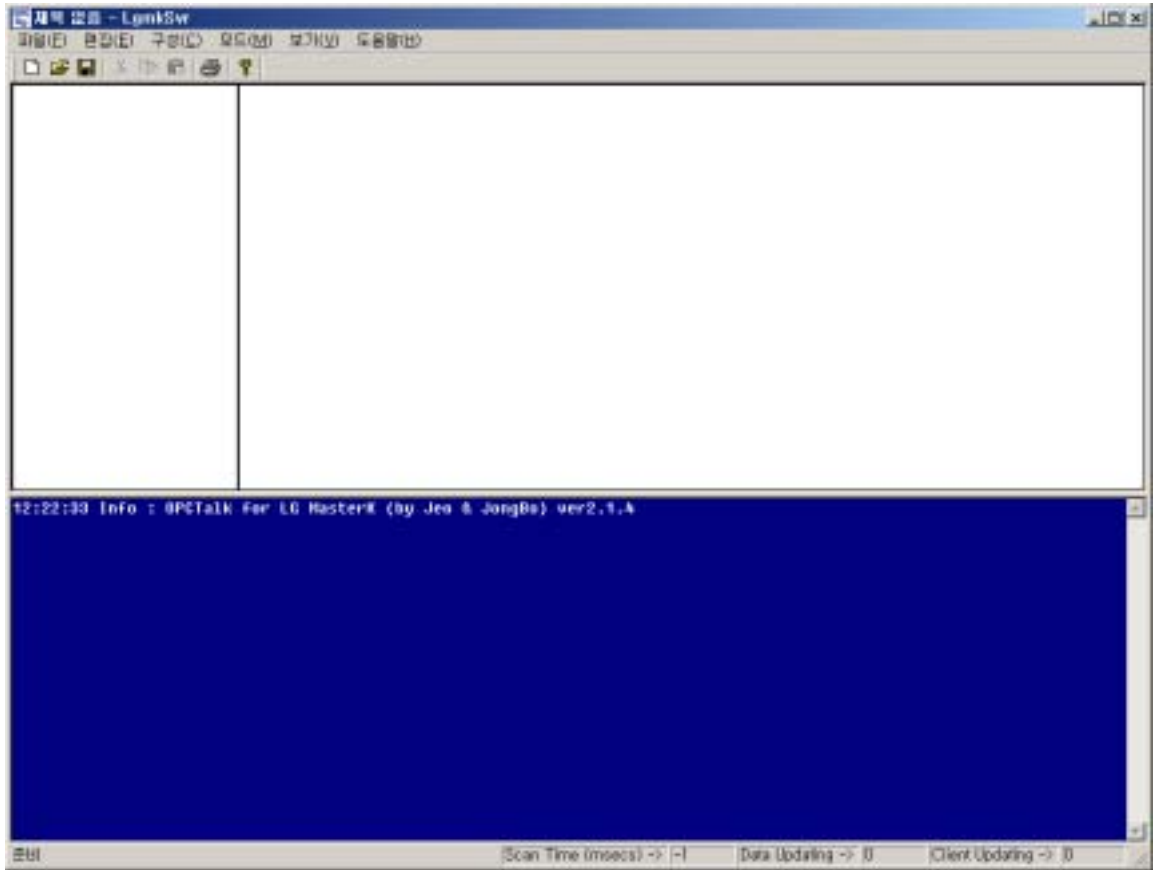


Evaluation

1

가





DataView

LogView

가

가

DataView

LogView

가

가

- Scan Time(msecs) = scan time msec
- Data Updating =
- Client Updating = HMI

- 
- 

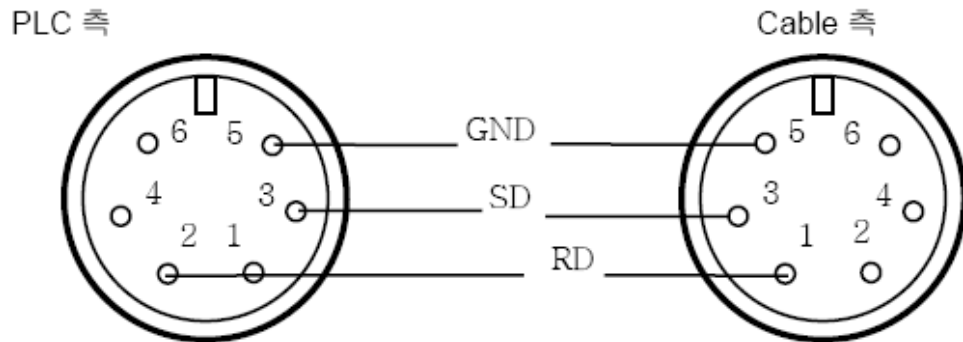
“

”

.

## 1

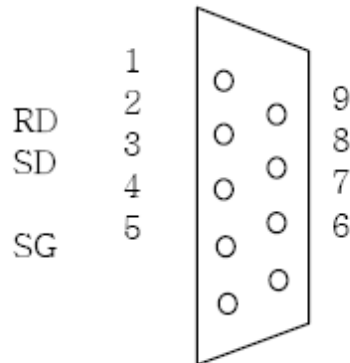
## MASTER-K10S (6Pin)



핀 번호	신호 명칭	신호 방향	비 고
1	NC		연결 안함
2	RD	PLC <== PC	RECIVE DATA
3	SD	PLC ==> PC	TRANSMIT DATA
4	NC		연결 안함
5	SG		SIGNAL GROUND
6	NC		연결 안함

**MASTER-K30S / 60S / 100S**

**(9Pin)**

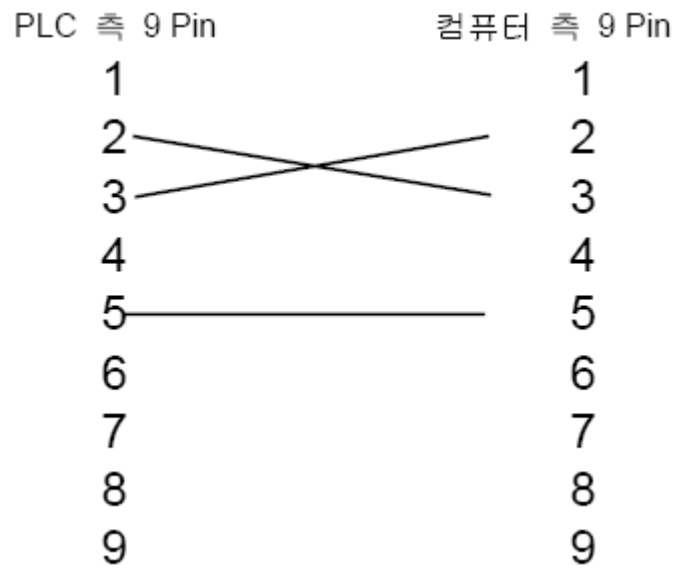
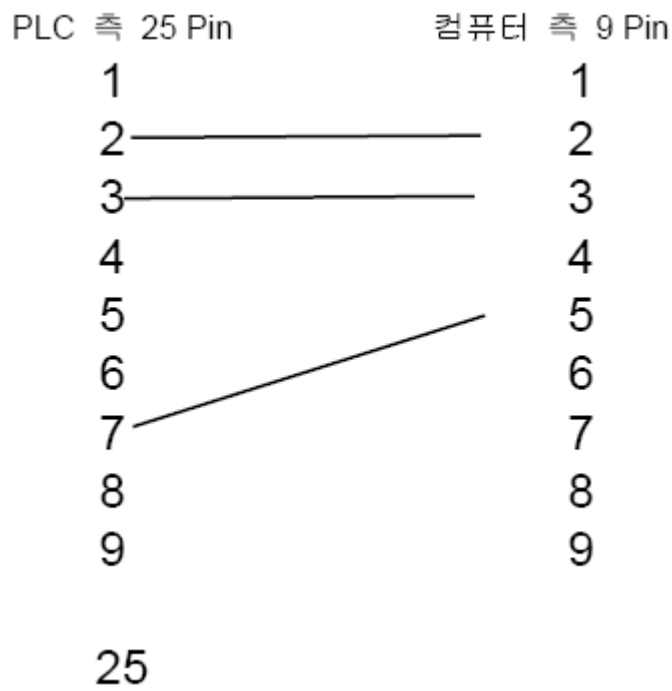


핀 번호	신호 명칭	신호 방향	비 고
1	NC		연결 안함
2	RD	PLC <== PC	RECIVE DATA
3	SD	PLC ==> PC	TRANSMIT DATA
4	NC		연결 안함
5	SG		SIGNAL GROUND
6~9	NC		연결 안함

**MASTER-K10S / 30S / 60S / 100S**

**RS-S485**

RS485 2 K10S, K100S 2Pin 가  
 K30S, K60S Option

**MASTER-K500 / 1000H****(25Pin)**

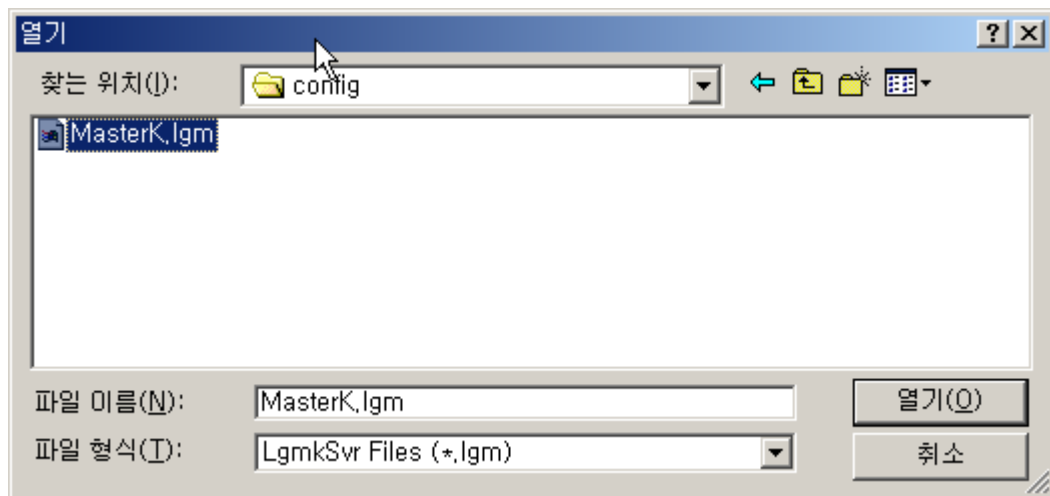


# 3.

가 Menu가

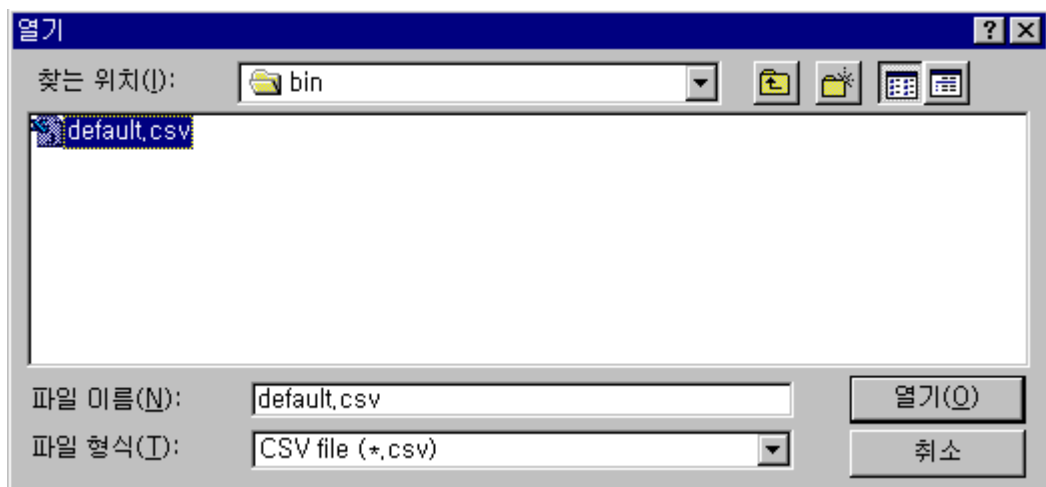
(F)			Ctrl+N
			Ctrl+O
			Ctrl+S
	가	가	
(E)			
(C)	Topic		
	Item		
	Topic 가	가	
	Item 가	가	
	Topic		
	Item		
(M)	Online		
	Offline		
(V)			
	Event		
	Command	Client	
	Action		
		Online	

data file



가

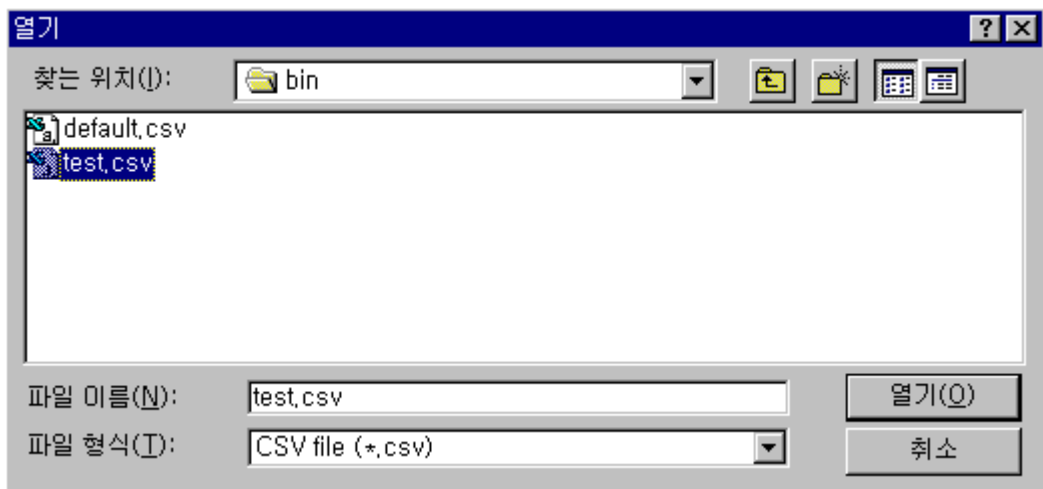
CSV CSV 가



“ ”



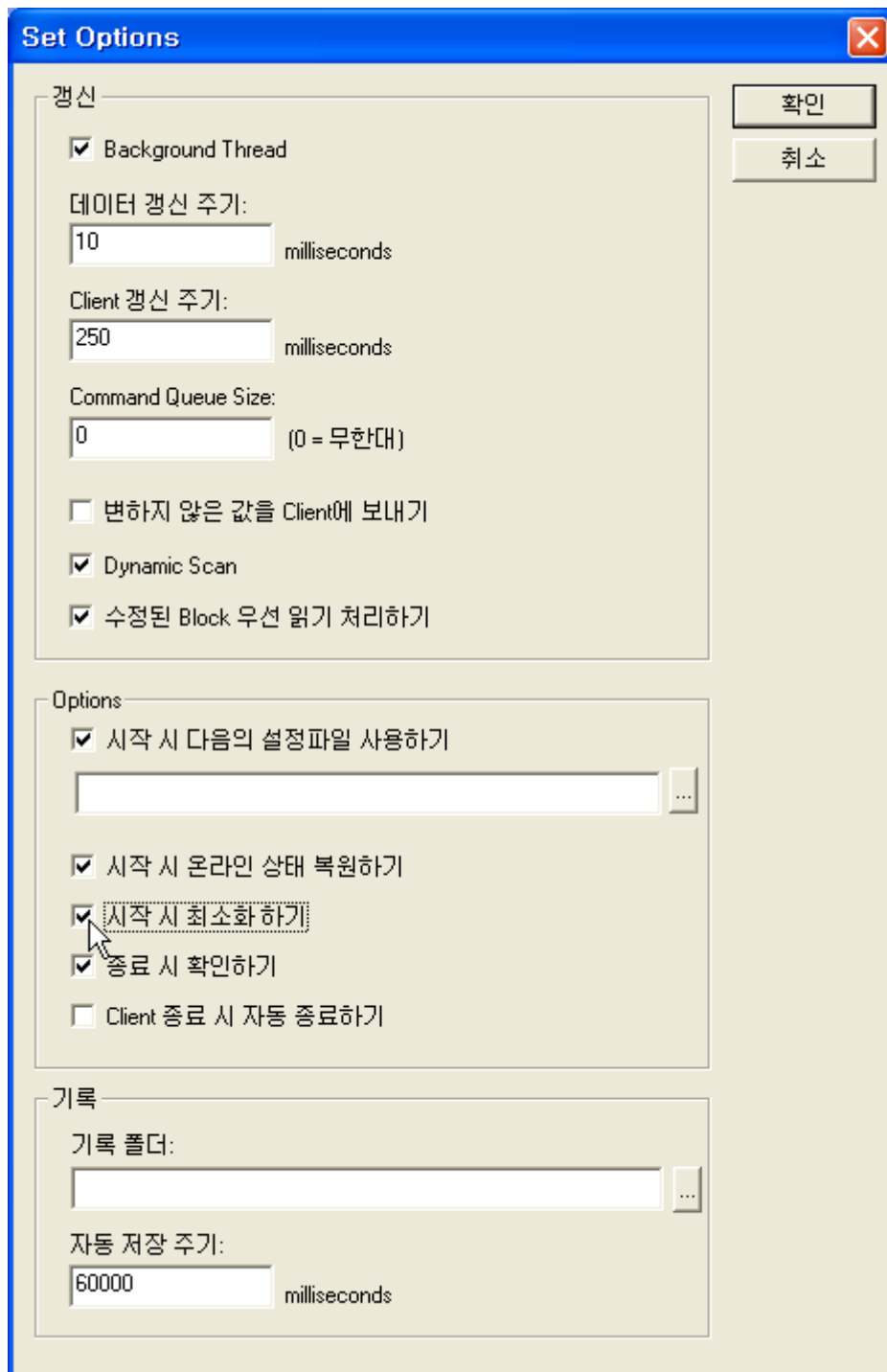
CSV 가



LogView Text

Text





## Update

### Background Thread

thread

= Yes

---

Frame sleep time (msecs)

= 10 msecs

### Client

Client program refresh (msecs)

= 250 msecs

### Command Queue Size

Client queue

= 0 ( )

---

### Client

Client

= No

### Dynamic Scan

Client item Block scan

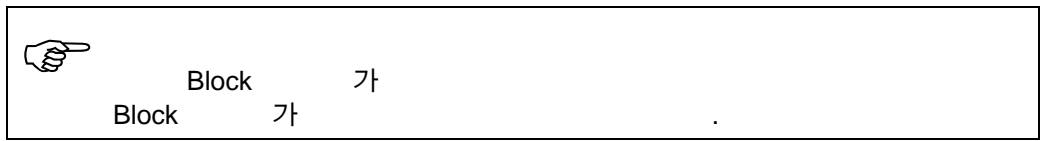
= Yes

---

### Block

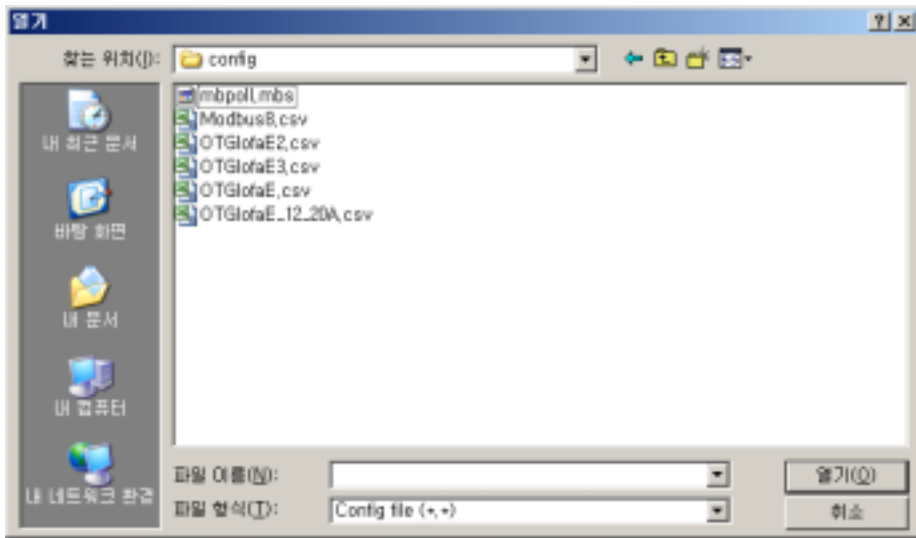
Client Block

= Yes



## Options

= No



online

= Yes

icon

= Yes

= Yes

**Client**

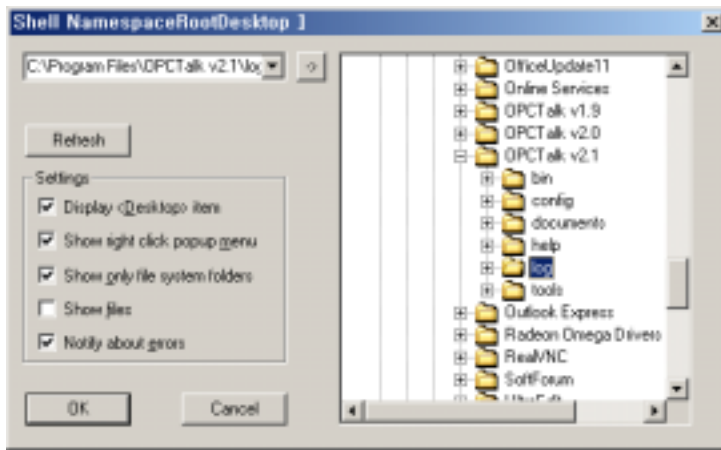
---

Client가  
= Yes

**Log**

---

Log file  
= log



Log file . (msecs)  
= 60000 (msecs), 1



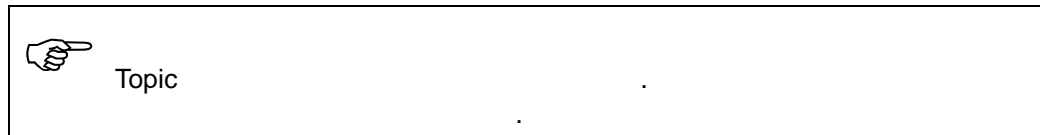


---

# PLC

## Device

Topic client PLC Topic



## Protocol

Cable 2가

### MK232

RS232 (1:1 )

### MK485

RS485 (1:N )

## Device Type

PLC CPU type

## Address

PLC CPU address

## Port

COM1, COM2

## Setting

, , Data , Stop Bit .



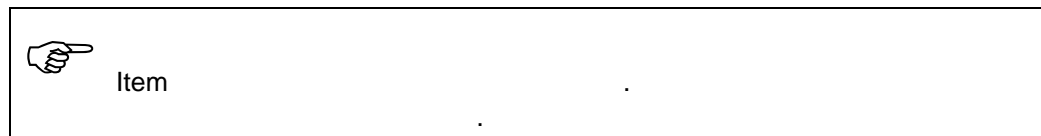
## Description

## Memory Block

### Block

Topic

PLC



### Name

Block



### Data Type

가

data

가

가

address

**Bool, Boolean**

, Bool  
P, M, L, K, F

**Short, Int16**

Integer (-32768 32767)  
P, M, L, K, C, T, D, S, F

**Word, UInt16**

Unsigned Integer (0 65535)  
P, M, L, K, C, T, D, S, F

**Long, Int32**

Long Integer (- 2,147,483,648 2,147,483,647)  
P, M, L, K, C, T, D, S, F

**DWord, UInt32**

Unsigned Long Integer (0 4,294,967,292)  
P, M, L, K, C, T, D, S, F


**Int64**

64Bit Unsigned Integer double client .

	Int64가	Device	.
---	--------	--------	---

**Float**

Float  
M

	Float	2	address	.
---	-------	---	---------	---

## Address

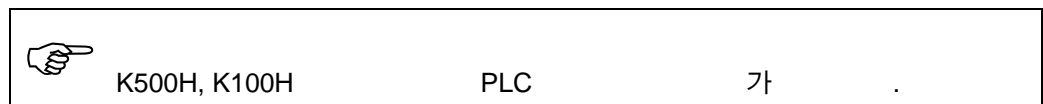
block address .

## Length

data block .

block data type .

- bool = 127
- word = 63



## Priority

가 .

2 data 1 2 .

## ReadWrite

rw

r

가 .

w

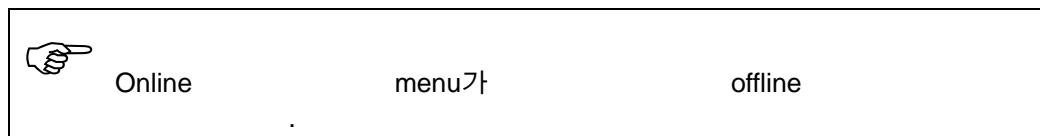
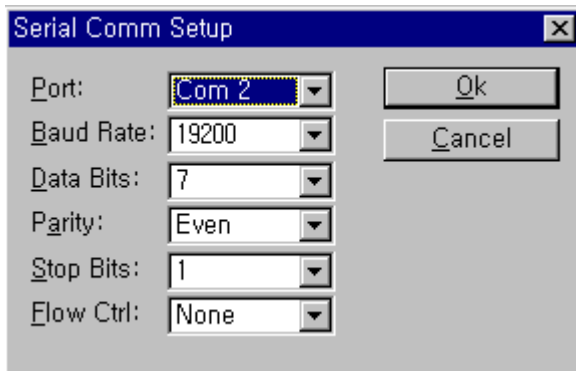
가 .

## ScanTime

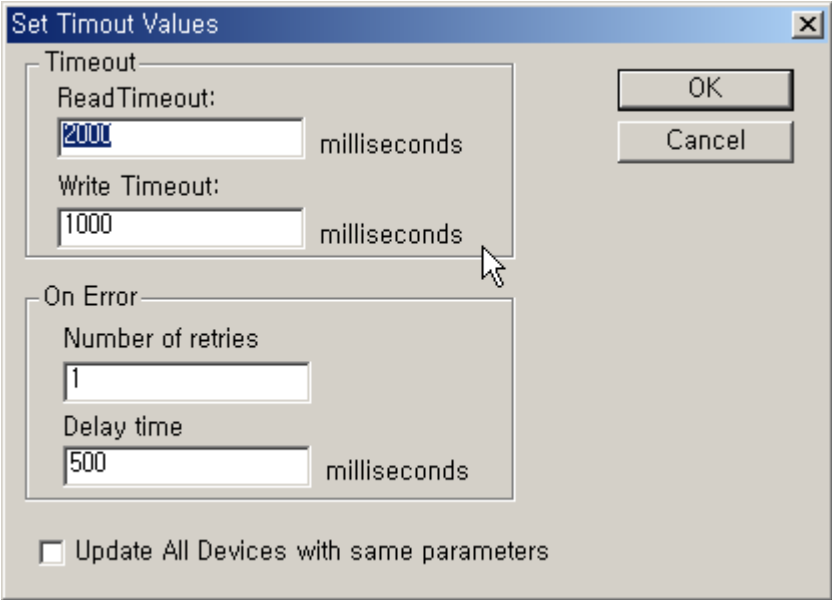
msec



- = com1
- = 19200
- Parity = Event
- Stop = 1 stop



# Timeout



## Timeout

### Read Timeout

timeout ( msecs)

### Write Timeout

timeout ( msecs)

## On Error

### Number of retries

### Delay Time

( msecs)

## Update All Devices with same Parameters

device

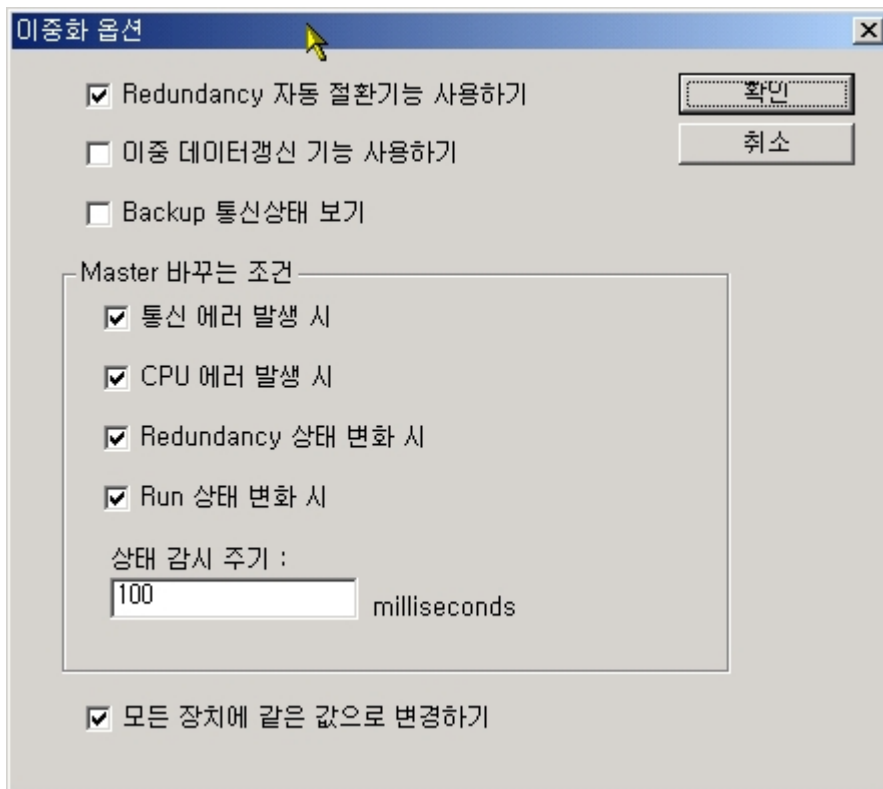
---

## Redundancy

Device 2 IP

;		MasterK30S = 2					
;		MasterK60S = 3					
;		MasterK100S = 4					
;		MasterK10S1 = 11					
;		MasterK30H = 21					
;		MasterK50H = 22					
;		MasterK60H = 31					
;		MasterK200H = 32					
		MasterK250S = 43					
		MasterK500H = 51					
		MasterK1000H = 52					
PLC1	MK232	12	1	COM1	9600 N 8 1		
PLC1	MK232	12	2	COM2	9600 N 8 1		
:Memory	Address	DataType	Length	Priority	ReadWrite	ScanTim	Description
PLC1	P000	Word	10	1	rw	0	
PLC1	M000	Word	10	1	rw	0	
PLC1	L000	Word	10	1	rw	0	
PLC1	K000	Word	10	1	rw	0	
PLC1	F000	Word	10	1	rw	0	
PLC1	T000	Word	10	1	rw	0	
PLC1	C000	Word	10	1	rw	0	
PLC1	S000	Word	10	1	rw	0	

## Options



## Redundancy

CPU

## Backup

backup

## Master

가

**CPU** \_\_\_\_\_

CPU 가

**Redundancy** \_\_\_\_\_

Master가 Backup

**Run** \_\_\_\_\_

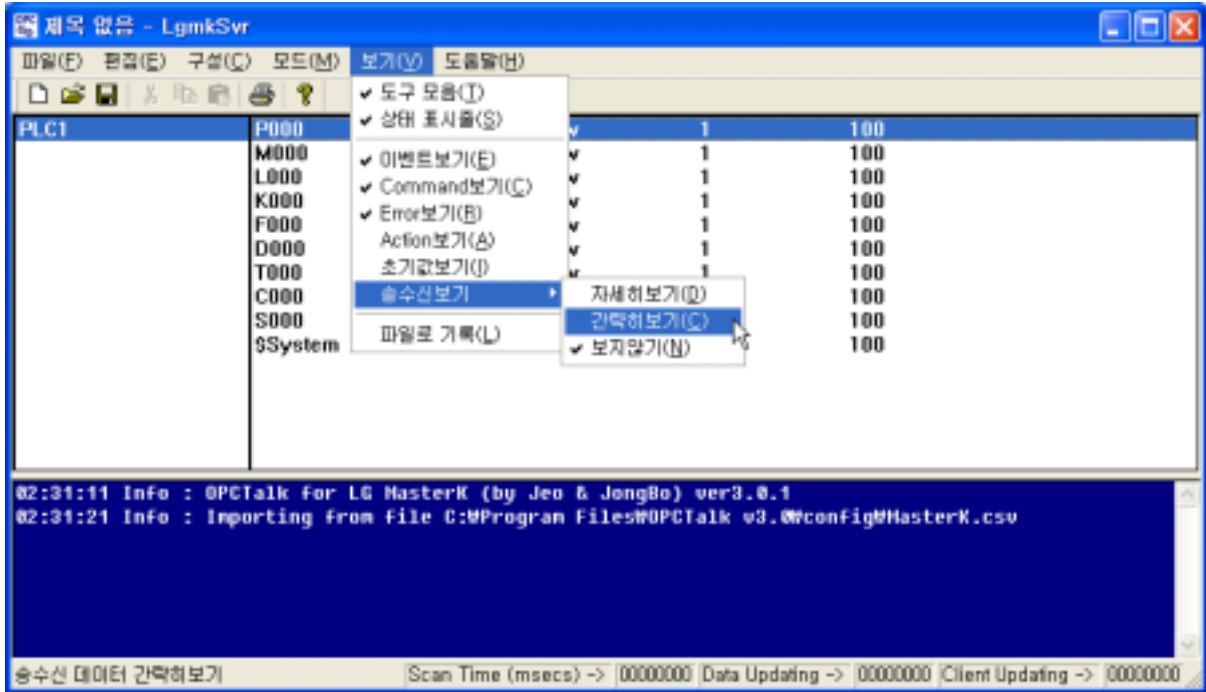
CPU가

\_\_\_\_\_

(msecs)

device





가

16:05:31 Event : New data [PLC1][P000:0] <- On

16:05:32 Event : New data [PLC1][P000:2] <- 3279

## Command

16:19:46 Command : New command [PLC1][P000:0] <- On

## Action

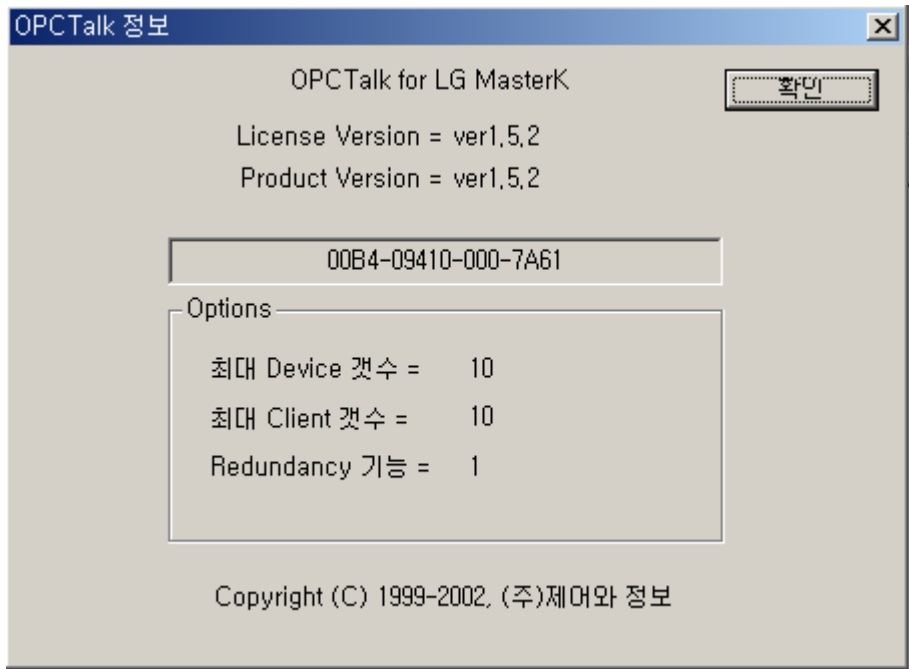
Action .

, block update , priority .

 가 .

## Log

Log yy-mm-dd.log  
log .



# 4. Naming

Client Client 가 Topic Item DDE/OPC Client Data Offset

- OTLgmk|[Topic ]!|[Item ] [Type ]

Offset

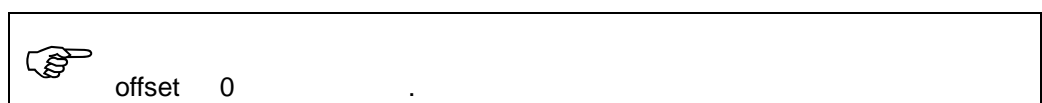
- OTLgmk|[Topic ]!|[Item ]:[Offset] [Type ]

가 block M000 WORD 16

M000  
M001  
M002  
...  
M015

## Offset

offset block block





```

M101/0 (M101      )
M101/1 (M101      )
...
M101/15 (M101 16  )

```

---

# Type

DataType 가 data .  
가 .

**B**

, Bool

**I1**

Signed byte (-128 127)

**UI1**

Unsigned byte (0 256)

**I2 S**

Integer (-32768 32767)

**UI2 U**

Unsigned Integer (0 65535)

**I4 L**

Long Integer (-2,147,483,648 2,147,483,647)

**UI4**

Unsigned Long Integer (0 4,294,967,292)

**R4 F**

Float

**R8**

Double

**Mxx**

( xx .)

---

Device

Client

: \$ACTVLINE

: Int16 (short)

:

- 1 =
- 0 = OffScan( Offline)
- 1 = Primary ( )
- 2 = Secondary ( )

: \$MODEMSTR (Master Mode), \$MODEBKUP (Backup Mode)

: Int16 (short)

:

- 1 =
- 0 = Ready( )
- 1 = Error( )
- 2 = Suspend( )
- 3 = Online( )
- 4 = Config ( )
- 5 = Remote( )

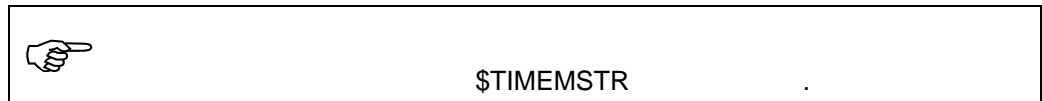
	\$MODEMSTR
---	------------

\_\_\_\_\_

: \$TIMEMSTR (Master Time), \$TIMEBKUP (Backup Time)

: Int32 (long)

: 가



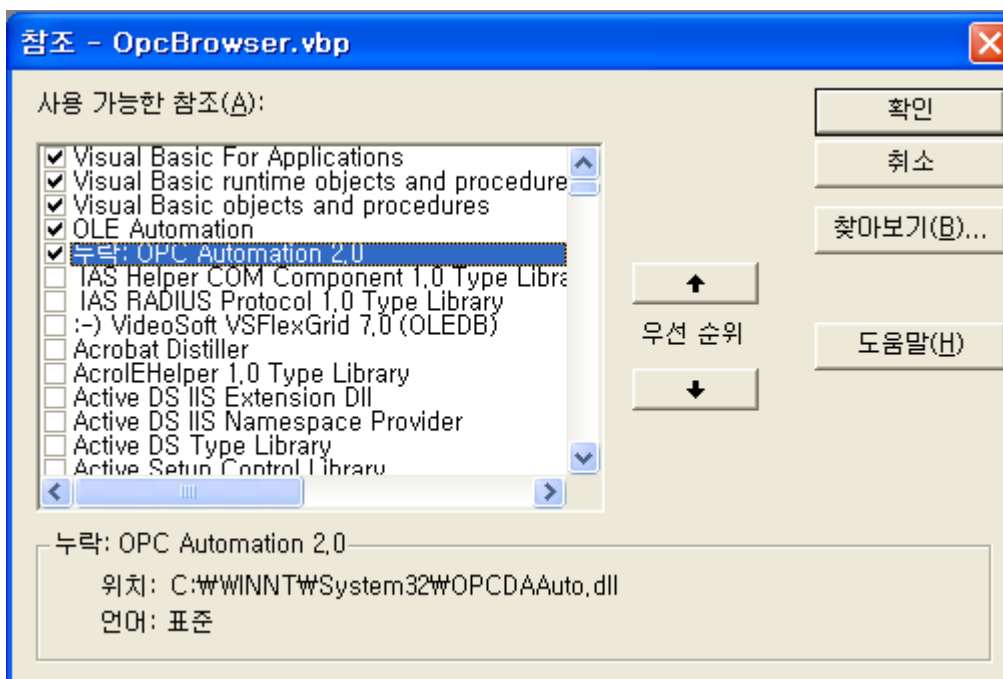


# 5. Client

## Excel


## OPC

OPC      Excel      VB      OPCDAuto  
가 .



## DDE

Cell      가 =OTLgmk|[Topic]![Item] :[Offset]

 Excel item ' ' 가  
= OTLgmk |PLC1!'MX000:0'

---

## InTouch

---

### OPC

InTouch OPC OPC Client Option 가 .

---

### DDE

- Application = OTLgmk
  - Topic = topic
  - ItemName = item
- 
- IODisc = bool
  - IOInt = word
  - IOReal = float
- item .

---

### FIX

# OPC

## I/O Driver

The image shows a 'SCADA Configuration' dialog box. It has a title bar with the text 'SCADA Configuration'. Inside, there are several sections:

- SCADA Support:** Contains two radio buttons, 'Enable' (which is selected) and 'Disable'.
- Database Definition:** Contains a text field labeled 'Database Name:' with the value 'DATABASE' and a question mark icon to its right.
- I/O Driver Definition:** Contains a text field labeled 'I/O Driver Name:' with the value 'OPC - OLE for Process Control Client 7.11' and a question mark icon to its right.
- Configured I/O Drivers:** A list box containing one entry: 'OPC - OLE for Process Control Client 7.11'. To the right of this list box are four buttons: 'Add', 'Configure...', 'Setup...', and 'Delete'.

At the bottom of the dialog box are three buttons: 'OK', 'Cancel', and 'Help'.

- Use Local Server = Yes

## Server

- ProgID = OPCTalk.LgmkSvr.1

	ProgID	Drive
---	--------	-------

**Group**

- I/O Type = Asynchronous
- Data Source = Cache
- Update Rate = 10
- % Deadband = 0

**Item**

- ItemID = Item
- Access Path =

---

## DDE

---

# RSView32

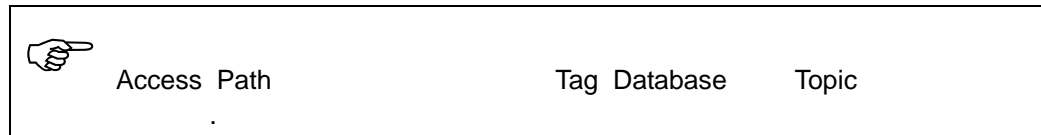
---

## OPC

**Node**

- Data Source = OPC Server
- Name =
- Server Name = OPCTalk.LgmkSvr.1

- Server Type = Local
- Access Path =



### Tag Database

- Data Source Type = Device
- Node Name =
- Address = [Topic]!Item




---

## DDE

### Node

- Data Source = DDE Server
- Name =
- Server Name = OTLGMK

### Tag Database

- Data Source Type = Device
- Node Name =
- Address = [Topic]!Item



---

# 6. Network Data

---

## OPC

---

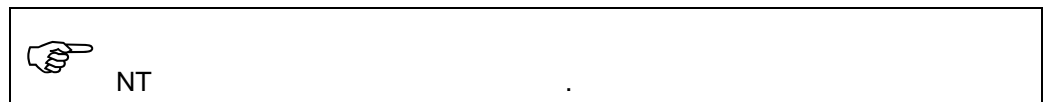
### Server

#### DCOM

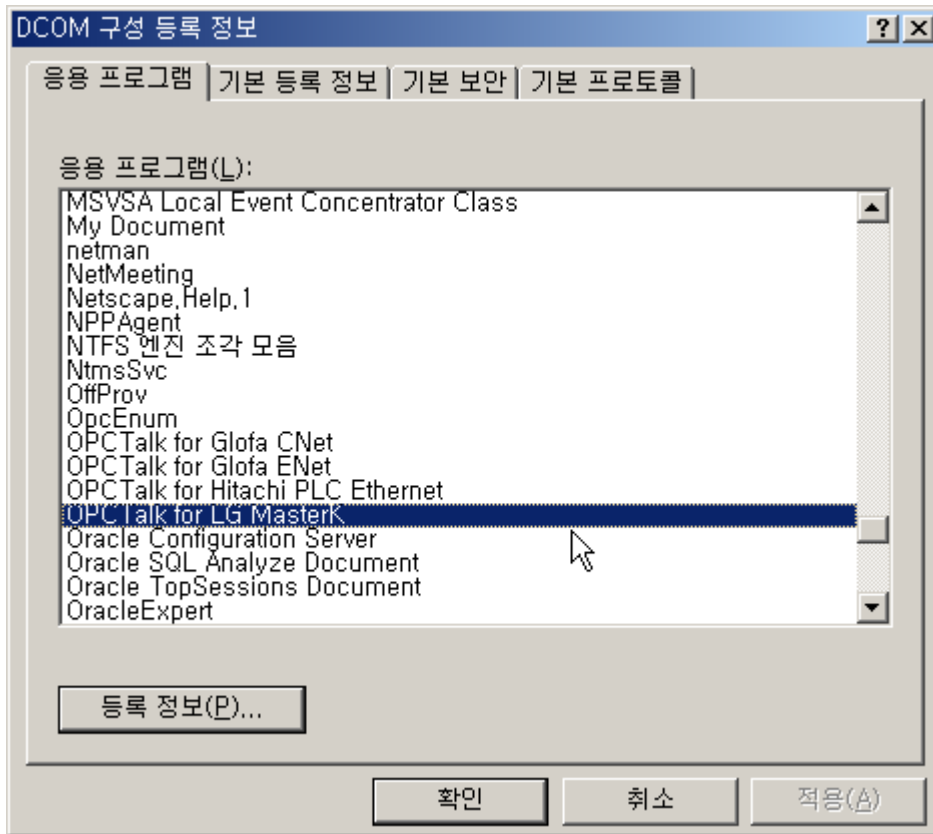
dcomcnfg.exe .

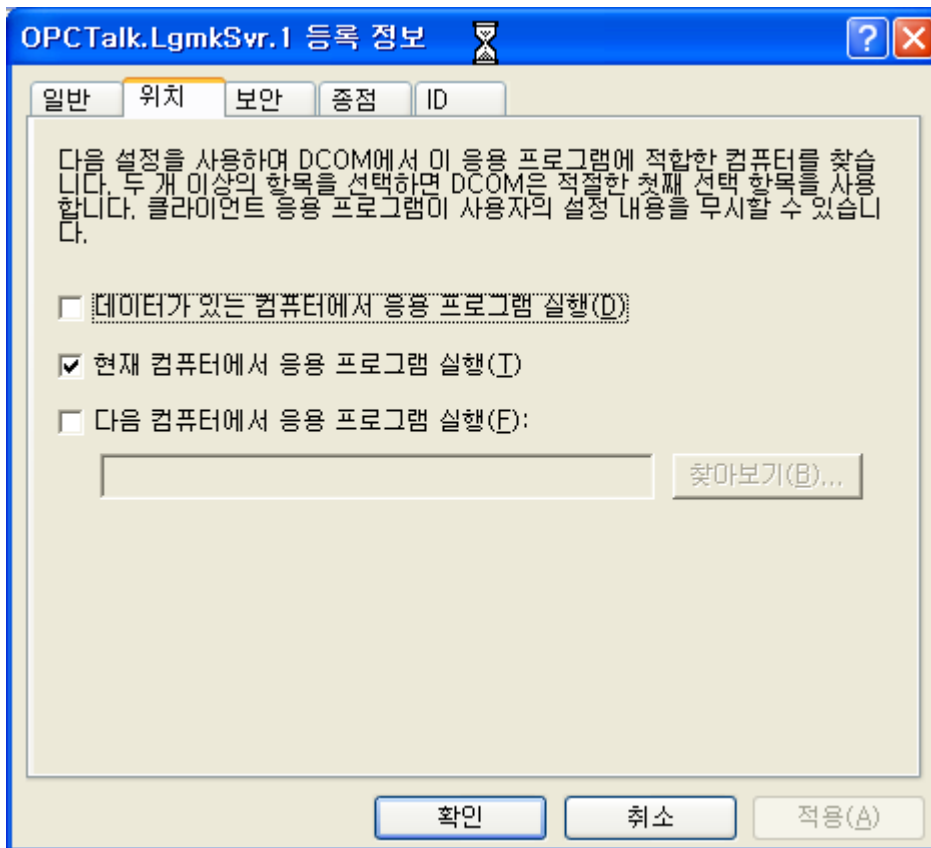
->

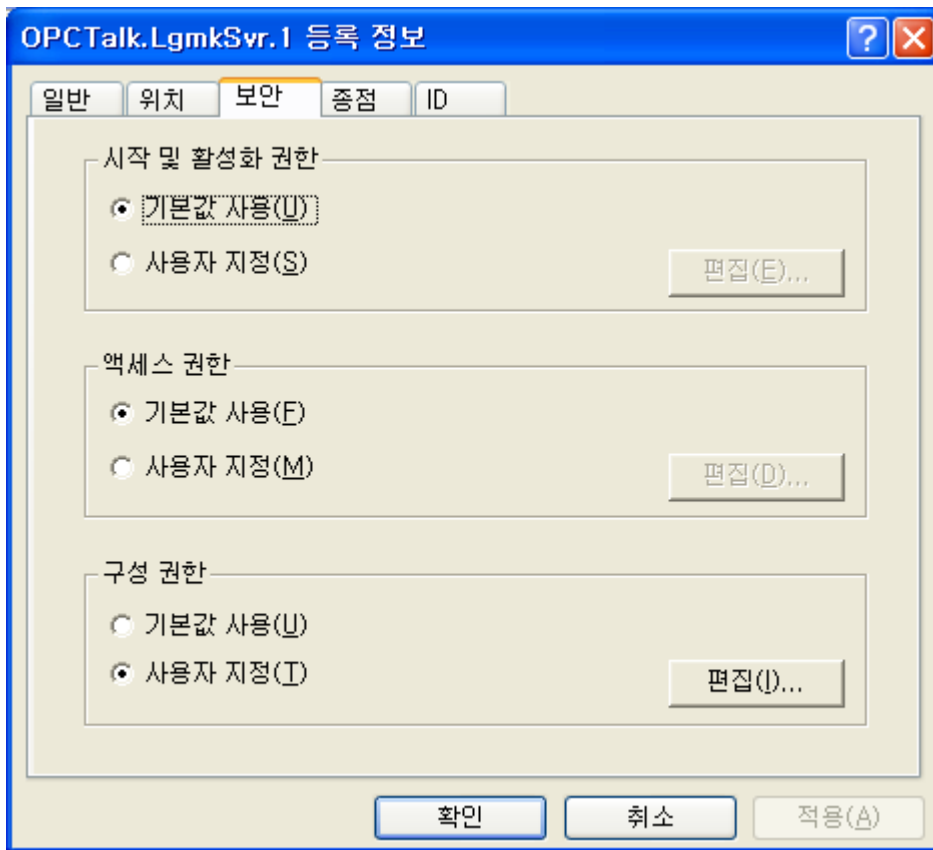
-> DCOM .



OPCTalk.LgmkSvr.1 .

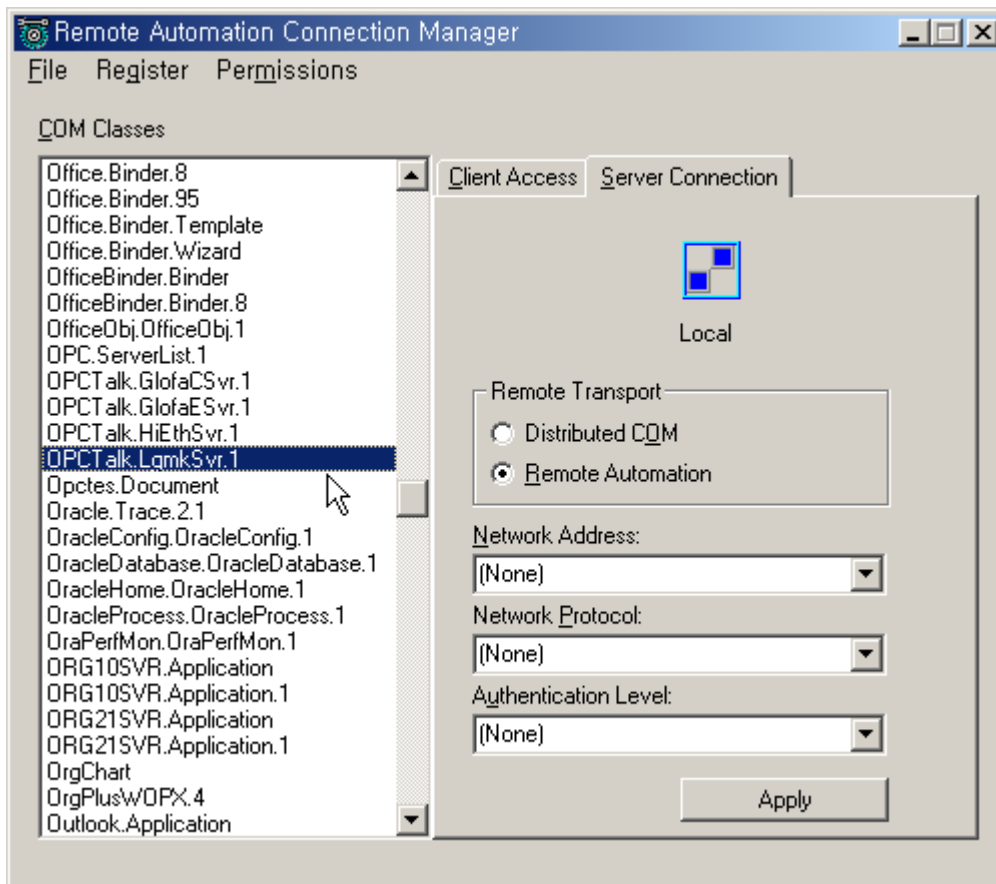






## Racmgr32

racmgr32.exe



가

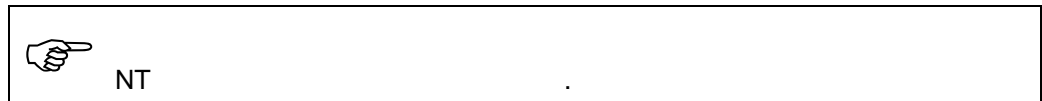


# Client

## DCOM

dcomcnfg.exe

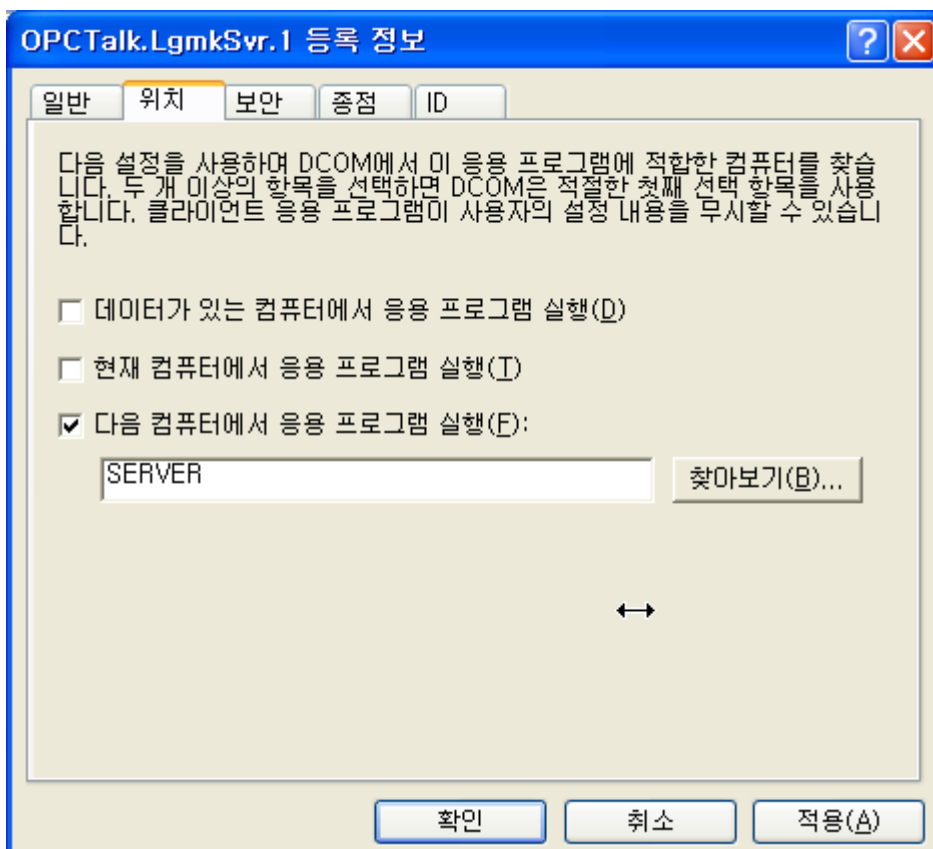
-> -> DCOM



Server

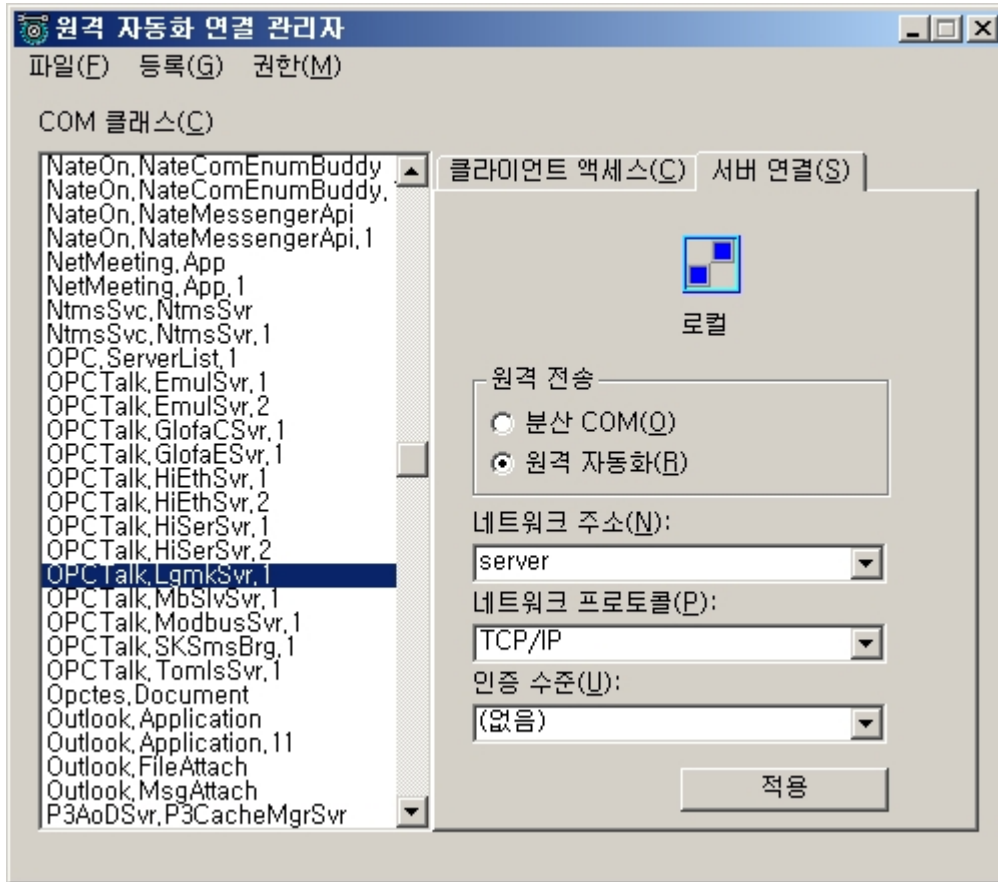
OPCTalk.OTLgmkSvr.1

server



## Racmgr32

racmgr32.exe

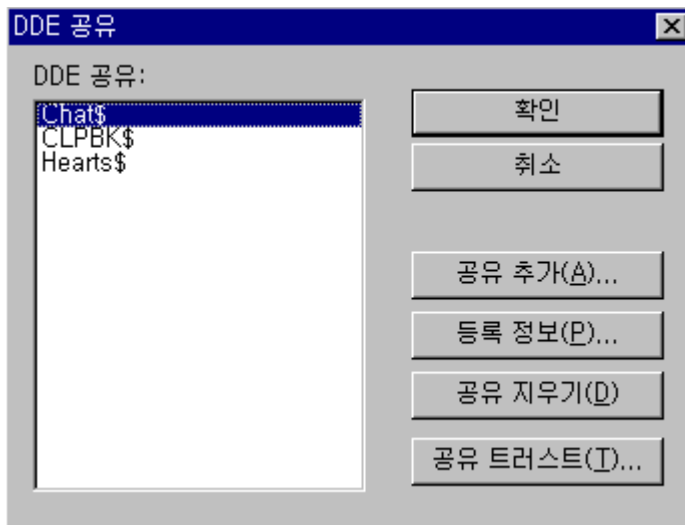


## NetDDE

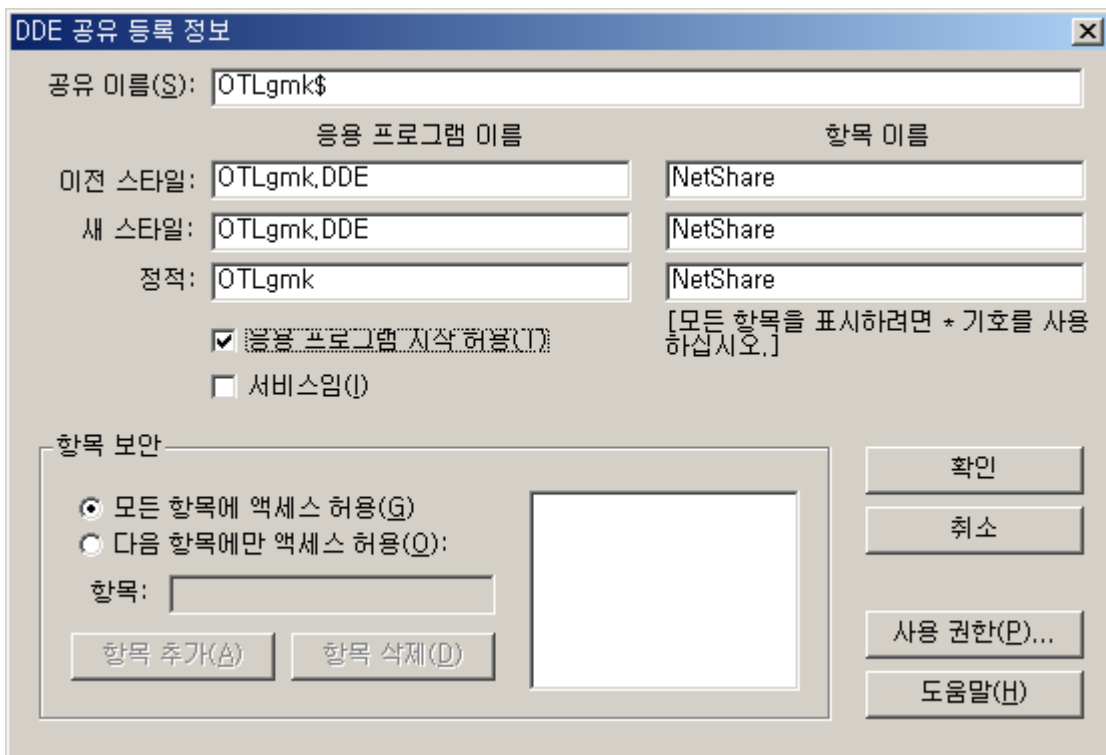
### Server

OPCTalk NetDDE LAN 가 가 .

Server "DdeShare"



가



OTLgmk

topic





# Appendix

---

## V3.2.x

### V3.2.0

- 
- ✓ Block 가
  - ✓ OPC2 OPC1 Tag naming
  - ✓ OPC2 Tag Browsing Block 가

- 
- ✓ OPC2
- 

## V3.1.x

### V3.1.0

- 
- ✓ Timeout message가 1

- 
- ✓ String Tag memory leakage
  - ✓ 가

## V3.0.x

### V3.0.7

- 
- ✓ Float Event가

### V3.0.3

- 
- ✓ String Tag (null)
  - ✓ String Tag DDE
  - ✓ OPC2 Item

### V3.0.1

- 
- ✓ Item Property Browsing Interface 가
  - ✓ Type 가

- 
- ✓ Export 가
  - ✓ Topic, Item 가

---

## V2.5.x

### V2.5.1

---

✓ 가

### V2.5.0

- 
- ✓ (\$ModeMstr,\$ModeBkup)가 offline quality가 Bad가
  - ✓ Dynamic Tag가 Bit

---

## V2.4.x

### V2.4.3

---

✓ Bit ‘/’ ‘.’ 가

### V2.4.2

---

✓ Invalid Index

## V2.4.1

✓ Com9 Mux

---

## V2.3.x

### V2.3.0

✓ Dynamic Scan scan 가. (Client item Block

---

## V2.2.x

### V2.2.0

✓ Bit Item Read/Write Block Read Write

---

## V2.1.x

### V2.1.9

✓ Client Tag Browsing Tree

## V2.1.8

\_\_\_\_\_

- ✓ System Tag가

## V2.1.7

\_\_\_\_\_

- ✓ ScanTime 0 Update가

## V2.1.6

\_\_\_\_\_

- ✓ Bit Access가 Direct Addressing  
( Base: offset/bit base/bit )
- ✓ T,C,S,D 가

\_\_\_\_\_

- ✓ System Tag 가  
\$DOONLINE = OnLine  
\$DORESET =  
\$DOEXIT =
- ✓ File Open csv file  
( .)

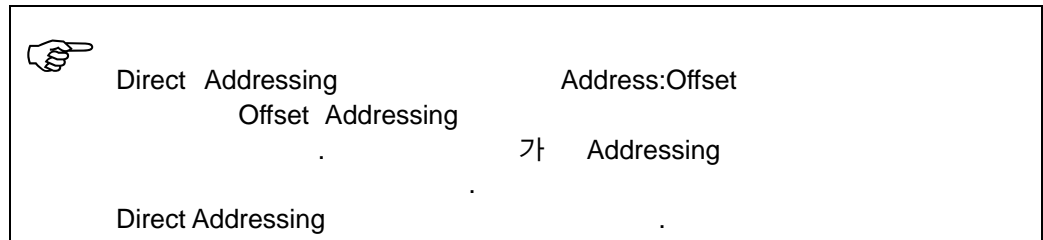
## V2.1.5

\_\_\_\_\_

- ✓ Direct Addressing
- ✓ MasterK T,C,S,D Hexa - Address가

( D00A -> D010, D00B -> D010)

- 
- ✓ Direct Addressing 가



## V2.1.4

- 
- ✓ OnLine/OffLine
  - ✓
  - ✓ \$ACTVLINE, \$MODEMSTR, \$MODEBKUP

- 
- ✓ , 가

## V2.1.2

- 
- ✓ Data Update Time System resource

---

## V2.1.1

- 
- ✓ OnLine/OffLine
  - ✓ 가

---

## V2.0.x

### V2.0.6

- 
- ✓ \$TIMEBKUP 65535가

- 
- ✓ \$System 가
  - ✓ \$ACTVLINE 가

### V2.0.5

- 
- ✓ Bit
  - ✓ Win98 Import/Export가

### V2.0.3

- 
- ✓ Byte가 New Data

## V2.0.1

✓

## V2.0.0

✓ VisualStudio .NET VC++

✓ Device 가 OffLine update

✓ On/Off Line

✓ Debug Message가 log

✓ “Cannot Open Master Comm Port” 가

✓ Device

- SYSMODE\_READY

- SYSMODE\_SUSPEND

- SYSMODE\_ONLINE

- SYSMODE\_ERROR

- SYSMODE\_CONFIG

- SYSMODE\_Remote

## v1.9.x

### v1.9.8

---

✓ (offset 가 가 )

---

✓

### v1.9.6

---

✓ MasterK %DW (GlofaCnet)  
✓

### v1.9.5

---

### v1.9.2

---

✓ Item Quality가

## v1.9.1

✓ Item Quality가 Update

## v1.9.0

✓ 가 Serial Number

---

## v1.8.x

### v1.8.0

✓ 64Bits Integer Integer Type

- Int8 – 8Bits Signed Integer
- Int16 – 16Bits Signed Integer
- Int32 – 32Bits Signed Integer
- Int64 – 64Bits Signed Integer
- Int8 – 8Bits Unsigned Integer
- Int16 – 16Bits Unsigned Integer
- Int32 – 32Bits Unsigned Integer
- Int64 – 64Bits Unsigned Integer

( 64Bits Integer Double Type Client )

## v1.7.x

### v1.7.0

---

- ✓ Data Type Unsigned short Short Typ
- ✓ Config File int2, int4
- ✓ Unsigned Long Event 가
- ✓ Detail Event Log가
- ✓ Dialog
- ✓ 가 Tag About

## v1.6.x

### v1.6.1

---

- ✓ AppID (dcomcnfg )
- ✓ OPCList v2.0 List
- ✓ OEM Tag ( 64Tag)

## v1.5.x

### v1.5.3

---

✓ PLC 8 8

### v1.5.2

---

✓ Memory가 “Long” 가 65535 .

### v1.5.1

- 
- ✓ Device Has Option field
  - ✓ Memory Block has ScanTime field
  - ✓ Redundancy Supported